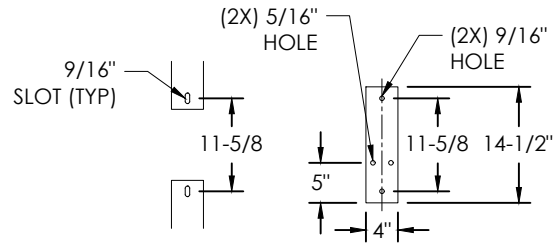
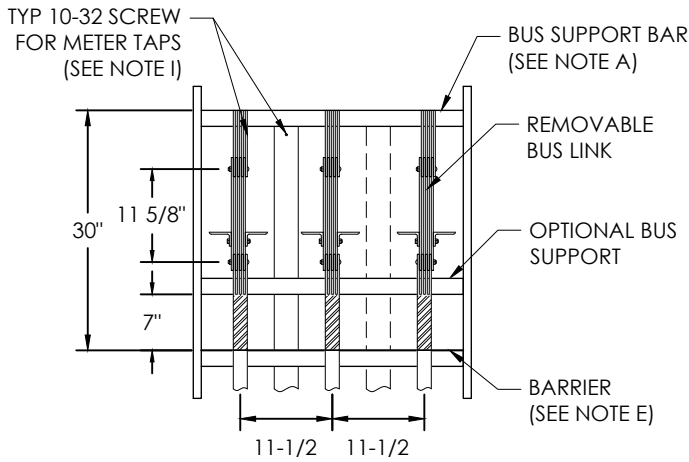


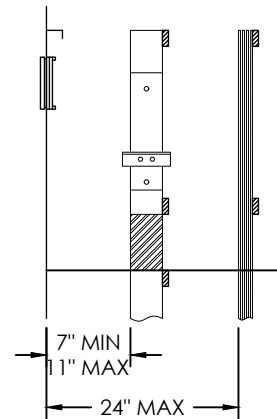
TOP VIEW



REMOVABLE BUS LINK DETAIL



FRONT VIEW



SIDE VIEW

NOTES

- A. Bus arrangements and supports shall be provided as shown. Bus units shall be anchored so that they remain in position when the removable bus link is removed. Bus supports shall be constructed of a continuous bar of insulating material.
- B. Bus may be supplied from the top or bottom, and shall be anchored to prevent turning. Maximum allowable bus size shall be four 1/4" x 4" bars spaced 1/4" apart.
- C. When the compartment is supplied from horizontal cross-bussing, the bussing shall pass through the compartment or in the sealed area above the compartment.
- D. Except for conductors supplying the current transformer compartment, no other conductors or devices shall be installed, or routed through, the compartment.
- E. The barrier shall be constructed of a rigid insulating material resistant to arc tracking and secured with nonconductive fasteners. Openings in the barrier shall not exceed 3/8".
- F. The current transformer compartment must be EUSERC 322 compliant and rated for a maximum of 600V, 1001 - 3000A. For switchboard C.T. service 0 - 1000A, see Standard 8-150. Services above 3000A are approved by exception only, contact Cowlitz PUD Engineering for more information.
- G. The high (power) leg bus for a 4-wire delta service shall be clearly identified by an orange marking.
- H. A clear unobstructed work space shall be provided around the current transformer bus units from the barrier to the upper support bar.
- I. A 10-32 screw tap shall be provided for meter wiring on each upper and lower phase bus unit, and on the neutral bus.

STANDARDS



PUBLIC UTILITY DISTRICT NO. 1  
Cowlitz County, Washington  
961 12th Avenue  
Longview, Washington

CONSTRUCTION STANDARDS  
ELECTRICAL SERVICE REQUIREMENTS  
C.T. COMPARTMENT, 1001 - 3000 A

Designed: M. Demos  
Checked: D. Tuominen  
Standards Approved: [Signature]

REV	DATE	DESCRIPTION
0	2/23/26	Initial release

Std/Dwg No.

8-140