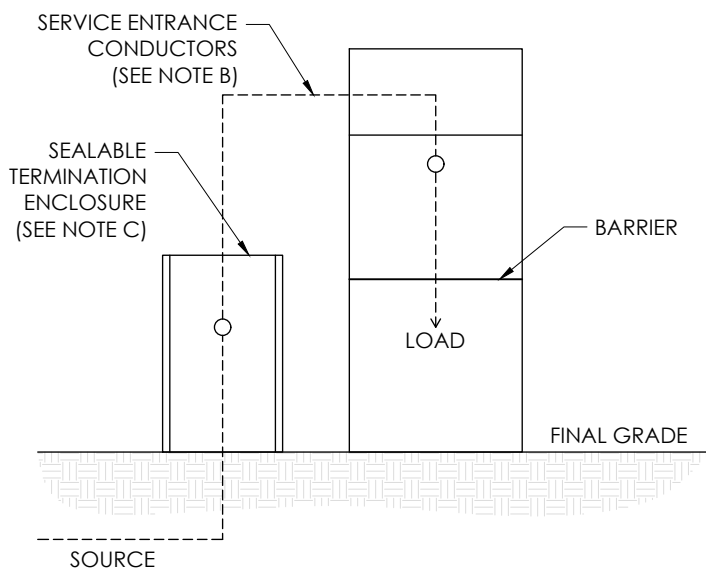


SWITCHBOARD PULL SECTION
400 - 3000 A

BOTTOM FEED SERVICE SECTION
0 - 2000 A





SEPARATE TERMINATION ENCLOSURE
400 - 1200 A

Notes:

- A. Termination facilities shall be EUSERC 347 compliant on all switchboard services 400 A and above.
- B. Bus bars or cables may extend from the pull section into the switchboard service sections rated up to 800 A. For service sections rated over 800 A, bus bars are required.
- C. Switchboard service with a separate termination enclosure is limited to 1200 A maximum, and must be EUSERC 343 compliant. See Standard 8-90 for details.
- D. Switchboard service with a bottom feed (reverse feed) service section is limited to 2000 A maximum.
- E. Services over 3000 A are approved by exception only, contact Cowlitz PUD Engineering for more information.
- F. A barrier shall be provided between the source-side pull and termination section and the load side.
- G. All pull and termination enclosures shall have full front access. Cover panels shall be removable, sealable, provided with two lifting handles, and limited to 9 square feet in area.
- H. When horizontal cross-busing exits the switchboard pull section below the terminating facilities, the lowest cross bus shall not be less than 2 feet above the bottom of the enclosure or more than 8 inches from the back of the enclosure.
- I. Ground bus, when provided, shall be located at the rear of the termination enclosure.

MINIMUM PULL SECTION DIMENSIONS			
SERVICE AMPACITY	W (3 WIRE)	W (4 WIRE)	X
400 - 800	24"	24"	42" MIN 72" MAX
801 - 1200	24"	30"	
1201 - 2000	30"	35"	60" MIN 72" MAX
2001 - 3000	-	42"	

 PUBLIC UTILITY DISTRICT NO. 1 Cowlitz County, Washington 961 12th Avenue Longview, Washington	STANDARDS CONSTRUCTION STANDARDS ELECTRICAL SERVICE REQUIREMENTS UG SWITCHBOARD TERMINATION, 400 - 3000 A		<table border="1"> <thead> <tr> <th>REV</th> <th>DATE</th> <th>DESCRIPTION</th> </tr> </thead> <tbody> <tr> <td>0</td> <td>2/23/26</td> <td>Initial release</td> </tr> <tr> <td> </td> <td> </td> <td> </td> </tr> <tr> <td> </td> <td> </td> <td> </td> </tr> </tbody> </table>	REV	DATE	DESCRIPTION	0	2/23/26	Initial release						
	REV	DATE	DESCRIPTION												
0	2/23/26	Initial release													
Designed M. Demos	Checked D. Tuominen	Standards Approved 	Std/Dwg No. 8-110												