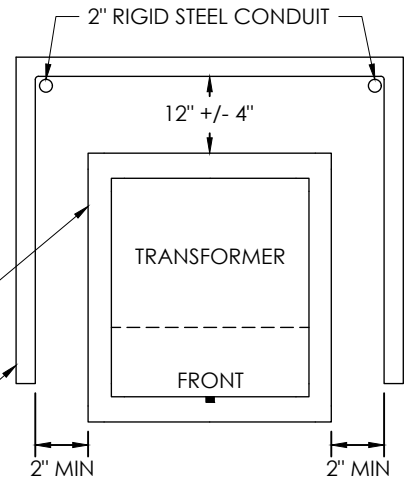
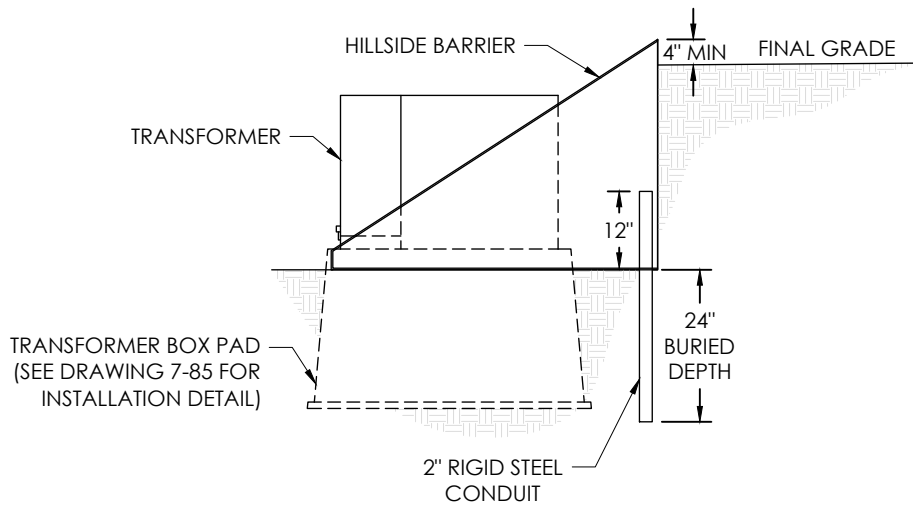


3D VIEW





TOP VIEW



SIDE VIEW

NOTES

- A. The customer is responsible for excavation and proper installation of hillside barrier. Coordinate with a PUD Planner to pick up barrier at the PUD's Operations Center.
- B. Provide flat and level excavated area free of rocks, roots, and debris. Compacted crushed rock may be used as a final level surface under barrier where needed.
- C. The bottom of the barrier must be +/- 12" of the elevation of the bottom of the pedestal.
- D. 2" rigid steel conduit must be driven in the interior corners of the barrier.

| STANDARDS   |   | CONSTRUCTION STANDARDS |   | REV     | DATE               | DESCRIPTION |
|---|---|------------------------|---|---------|--------------------|-------------|
|  <p><b>PUBLIC UTILITY DISTRICT NO. 1</b><br/>Cowlitz County, Washington<br/>961 12th Avenue<br/>Longview, Washington</p> | <p><b>ELECTRICAL SERVICE REQUIREMENTS</b><br/><b>HILLSIDE BARRIER</b></p> |                        | 0   | 3/3/25  | Initial release    |             |
|   |   |                        | Designed  | Checked | Standards Approved | Std/Dwg No. |
|   | MJD   | DPT                    |  |         |                    | <b>7-87</b> |