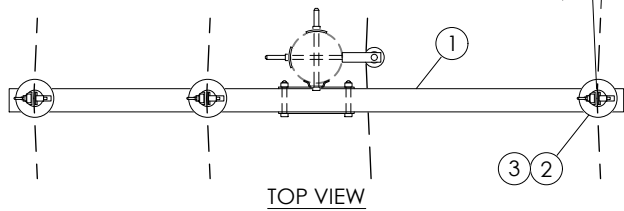
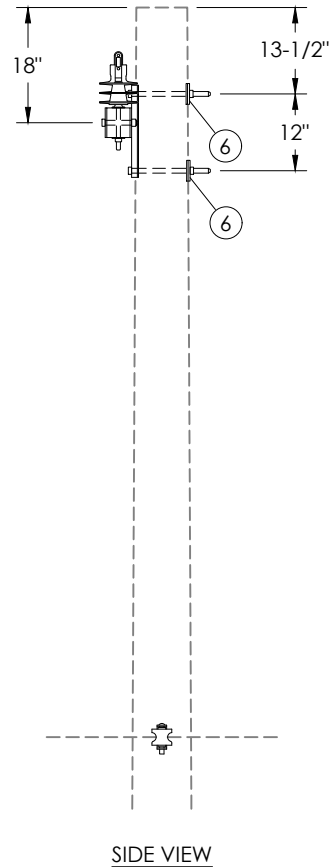
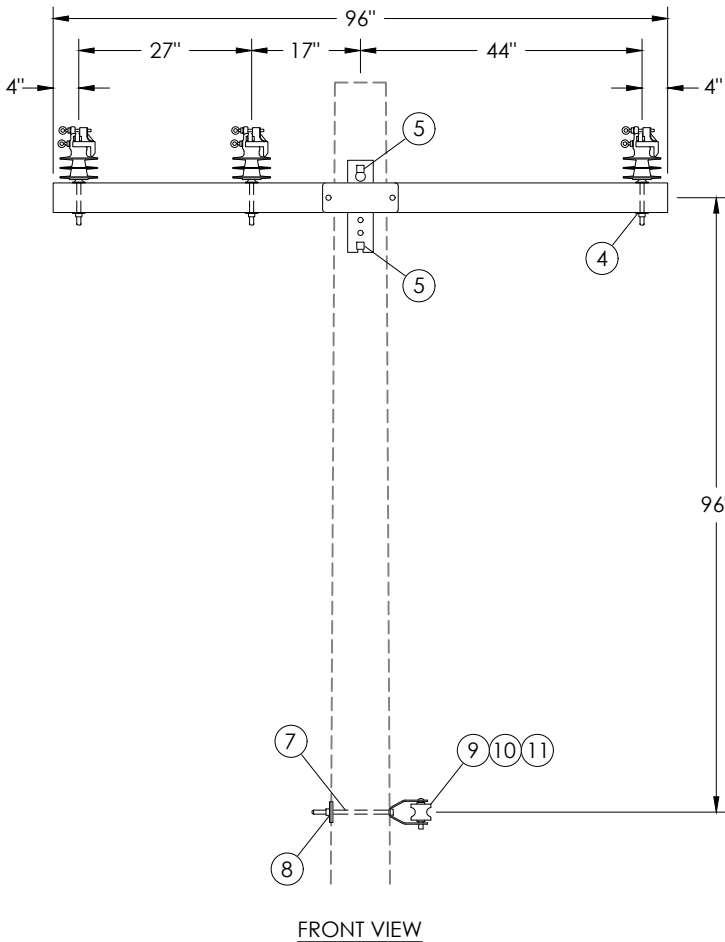


5° MAX LINE ANGLE



MAXIMUM SPAN LENGTHS	
2 AAAC	375'
123 AAAC (1/0 Eq)	425'
1/0 AAC Tree Wire	300'
246 AAAC (4/0 Eq)	450'
394 AAAC	375'
397 AAC Tree Wire	350'
652 AAAC	350'
927 AAAC	300'



ITEM	QTY	ITEM #	MATERIAL DESCRIPTION	AU #
1	1	105205	Crossarm, FG, 8', 4-3/4" x 5-3/4", for 5/8" pins	930513
2	3	195235	Insulator, polymer pin, vise top	
3	3	230120	Pin, crossarm, 5/8" x 6-1/2", 1" nylon threads	
4	3	350210	Washer, square, 2-1/4" x 2-1/4", 11/16" hole	
5	2	120462	Bolt, machine, 3/4" x 12", with square nut	
6	2	350120	Washer, square curved, 3" x 3", 13/16" hole	
7	1	120432	Bolt, machine, 5/8" x 12", with square nut	
8	1	350110	Washer, square curved, 3" x 3", 11/16" hole	
9	1	145310	Clevis, neutral bracket	
10	1	145311	Insulator, polymer neutral spool	
11	6'	560496	Tie wire, #4 Al	

Notes:

1. Contact Standards for other needed conductors or span lengths.
2. Adjust bolt lengths as necessary.

	STANDARDS		CONSTRUCTION STANDARDS		REV	DATE	DESCRIPTION
	3 PHASE OVERHEAD DISTRIBUTION LIGHT ANGLE, BRACELESS 8FT FG ARM, 1-5°				0	10/06/25	Initial release
Designed D. Tuominen			Checked M. Demos		Standards Approved 		Std/Dwg No. 3-513