
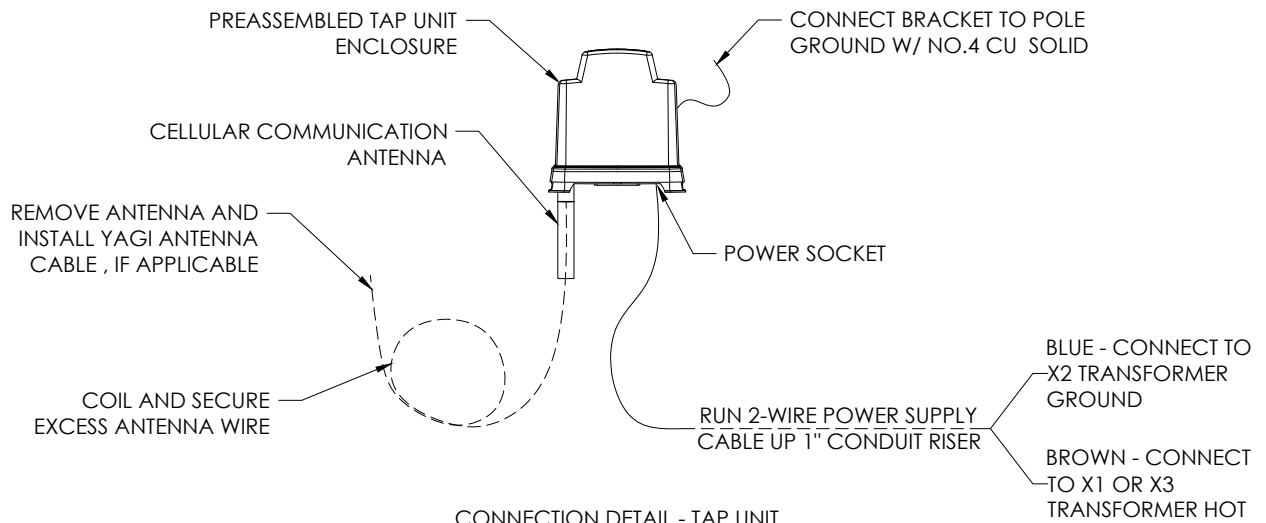


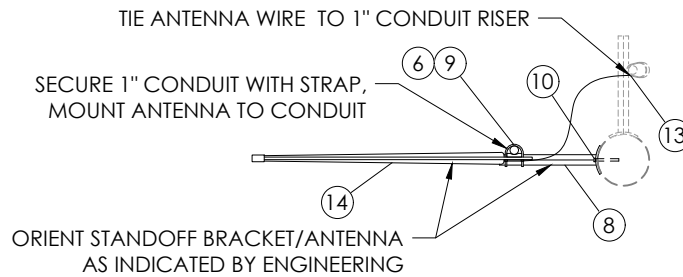
Notes:

1. Minimum 6' if TAP unit is mounted directly below transformer or any other large metal equipment.

STANDARDS		CONSTRUCTION STANDARDS		REV	DATE	DESCRIPTION
 <p>PUBLIC UTILITY DISTRICT NO. 1 Cowlitz County, Washington 961 12th Avenue Longview, Washington</p>	<p>EARLY FAULT DETECTION STANDARDS TAP UNIT INSTALLATION</p>		0	11/19/25	Initial release	
			Designed D. Tuominen	Checked D. Thomas T. Walling	Standards Approval <i>[Signature]</i>	Std/Dwg No. 11-202 (1 of 2)



CONNECTION DETAIL - TAP UNIT



DIPOLE ARRAY ANTENNA OPTION - TOP VIEW

ITEM	QTY	ITEM #	MATERIAL DESCRIPTION	AU #
1	1	MTR0470	Fault detection tap sensor/control box	991126
2	4	284096	Lag bolt, 1/4" x 2"	
3	2	417310	Male straight fitting, 1" NM flex conduit	
4	1	402137	Female adapter fitting, 1" PVC to 1" IPS	
5	5'	417300	Conduit, 1" flexible, non-metallic	
6	10'	416137	Conduit, 1" SCH 40 PVC	
7	1	410110	Service entrance cap, 1" PVC	
8	2	585145	Conduit standoff bracket, 15"	
9	2	585155	Conduit strap, 1"	
10	4	284098	Lag bolt, 3/8" x 4"	
11	1	1551XX	Connector, ground clamp, vise type, size varies	
12	2'	606160	Wire, No. 4 sol Cu, bare, soft drawn	

DIPOLE ARRAY ANTENNA OPTION - ADDITIONAL MATERIALS

ITEM	QTY	ITEM #	MATERIAL DESCRIPTION	AU #
6	1'	416137	Conduit, 1" SCH 40 PVC	991130
8	1	585145	Conduit standoff bracket, 15"	
9	1	585155	Conduit strap, 1"	
10	2	284098	Lag bolt, 3/8" x 4"	
13	6	808655	Cable tie, standard duty	
14	1	MTR0440	Antenna, directional wideband, conduit mount, for INDT GEN4/Tap unit	

STANDARDS



PUBLIC UTILITY DISTRICT NO. 1

Cowitz County, Washington
961 12th Avenue
Longview, Washington

**CONSTRUCTION STANDARDS
EARLY FAULT DETECTION STANDARDS
TAP UNIT INSTALLATION**

Designed: D. Tuominen
Checked: D. Thomas, T. Walling
Standards Approved: [Signature]

REV	DATE	DESCRIPTION
0	11/19/25	Initial release

Std/Dwg No. **11-202 (2 of 2)**